

CARDINGTON *STUDIOS*



FORWARD

HOST TO MANY BLOCKBUSTER MOVIES AND ONE OF THE LARGEST INDOOR SPACES IN EUROPE, THE HUGE SCALE OF CARDINGTON STUDIOS MAKES IT A TOP CHOICE FOR FILM PRODUCTIONS AND STADIUM TOUR REHEARSALS.

The incredible height of 55m (180ft) floor to top of the roof pitch allows designers to build in a space not restricted in any way. Cardington Studios provides numerous refurbished production offices, H&S office, medic room, refurbished workshops, vast holding areas and catering, along with acres of external parking and backlot.

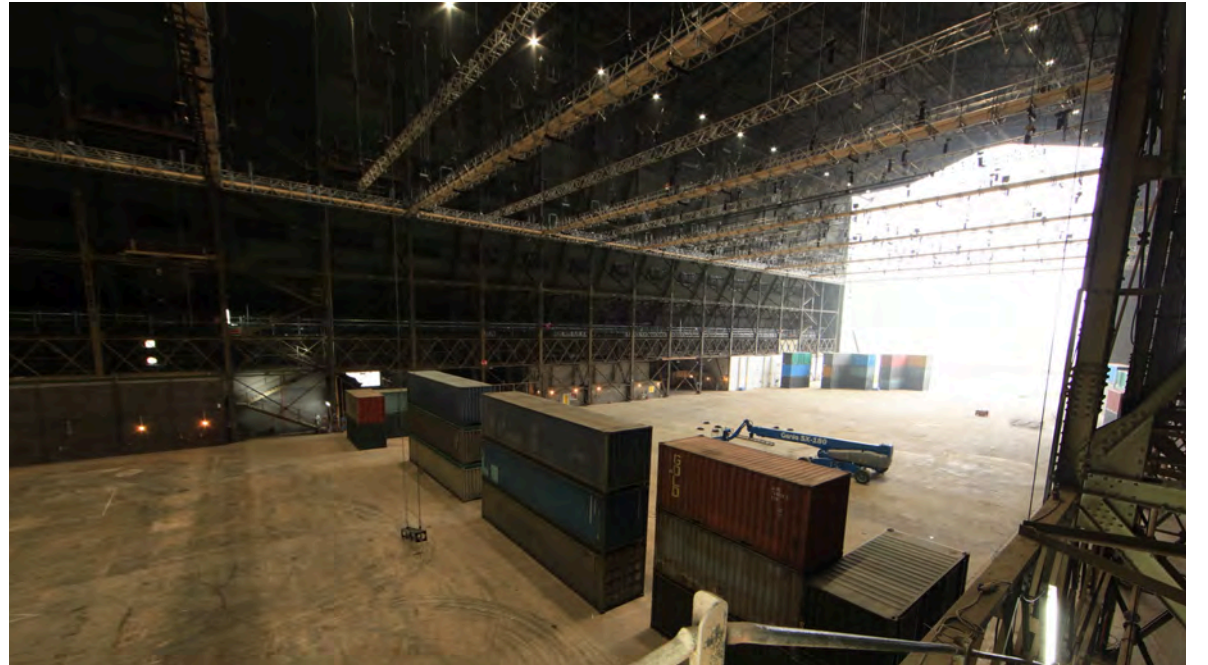
01234 744200

info@cardingtonstudios.com

Hangar 2, Cardington Airfield,

Bedford, MK42 0TF





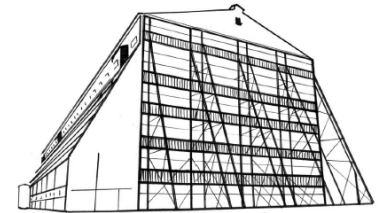




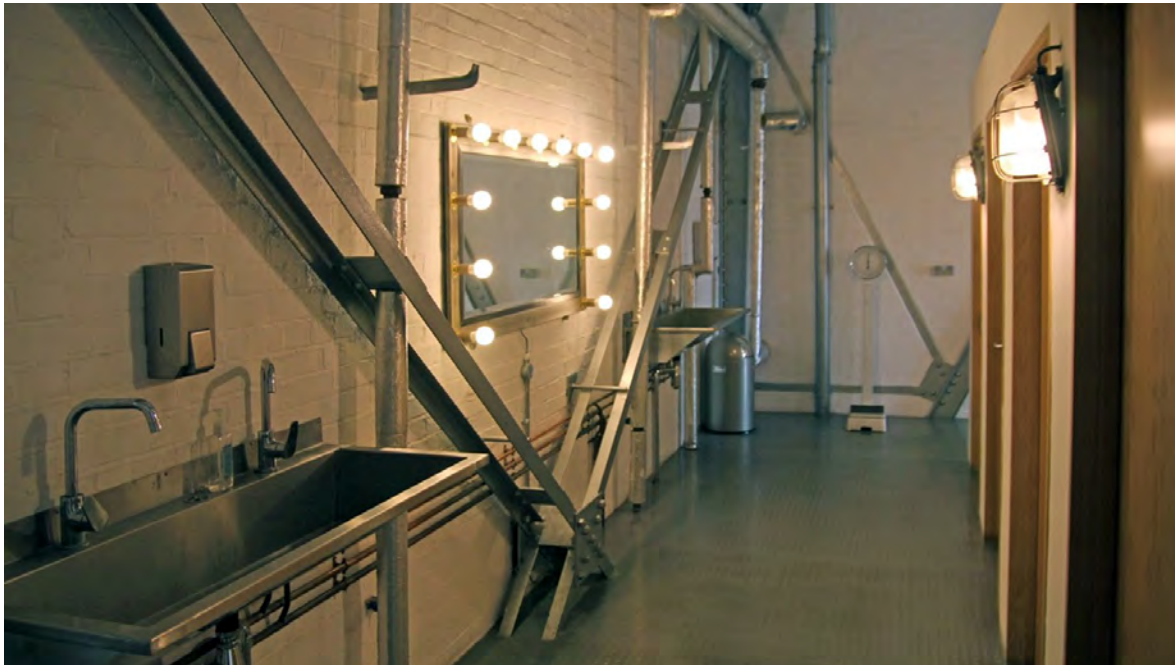


CARDINGTON STUDIOS, BEDFORD (UK) SPECS:

- ONE OF THE LARGEST CLEAR SPAN STUDIO SPACES IN EUROPE
- 265,000 SQ FT FLEXIBLE SPACE ON 20 ACRE SITE + 6 ACRE OVERFLOW LOT
- 145,000 SQ FT MAIN STUDIO FLOOR SPACE
- 1,500m LOAD BEARING 'SMART' GANTRY SYSTEM RIGGED OVER STAGES 1-3
- TRUSS GRID RIGGED OVER STAGE 4
- 10,350 SQ FT OF AIR CONDITIONED OFFICES
- 51,250 SQ FT HEATED MULTI PURPOSE AREAS
- 36,250 SQ FT HEATED WORKSHOPS / MILL SPACES
- 15,000 SQ FT DETACHED WORKSHOPS / STORES
- 3,500 SQ FT CATERING AREA WITH COMMERCIAL KITCHEN
- 8 ACRES OF PARKING & STORAGE
- 6 ACRES OF GRASS BACKLOT (+ 6 ACRE OVERFLOW LOT)
- EXTENSIVE STOCK OF HOISTS, TRUSS & RIGGING INTEGRATES WITH GANTRY SYSTEM



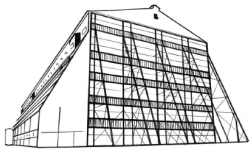
CARDINGTON STUDIOS





CARDINGTON STUDIOS, CREDITS:

- Batman Begins
- Fred Claus
- Dark Knight
- Inception
- Dark Knight Rises
- Pan
- Rogue One: A Star Wars Story
- The Legend of Tarzan
- Fantastic Beasts and
- Allied
- The Mercy
- Dumbo
- Star Wars: The Return of Skywalker



CARDINGTON STUDIOS



THE RISE OF SKWALKER

STAR WARS

STAR WARS: EPISODE IX - Rise of Skywalker (2019)

In the riveting conclusion of the landmark Skywalker saga, new legends will be born-and the final battle for freedom is yet to come.

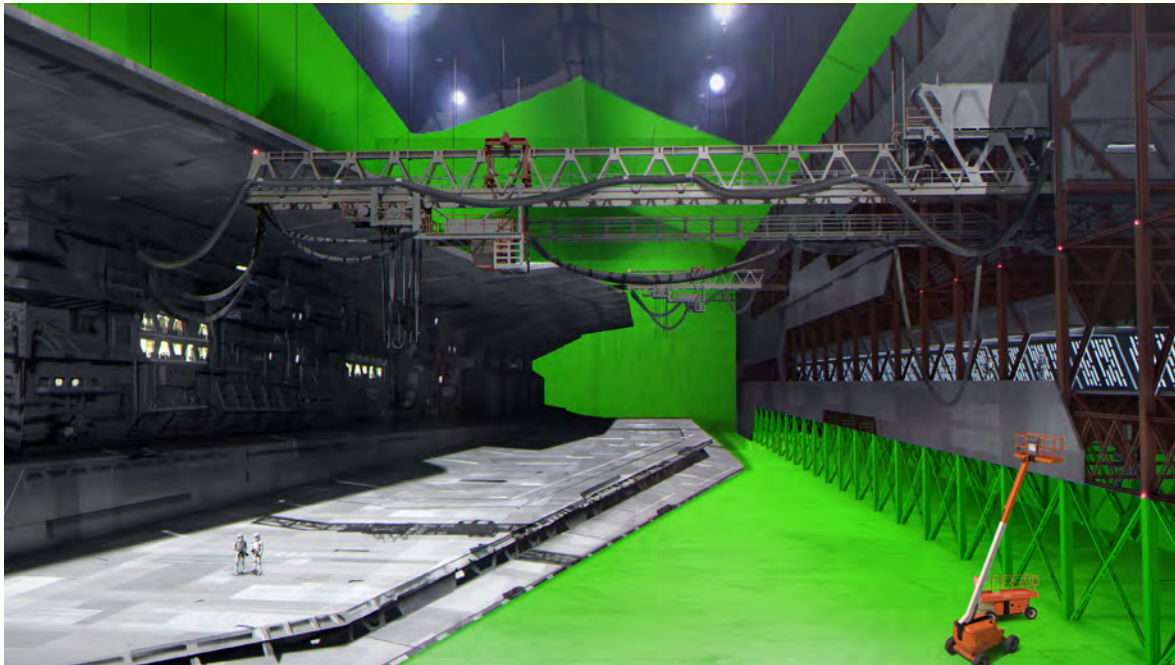
Some scenes from The Rise of Skywalker were also shot at Cardington Studios in Bedfordshire, which is actually a former Royal Air Force hangar. Rogue One had previously used this studio for Yavin IV scenes.

DISNEY

Budget
\$275,000,000

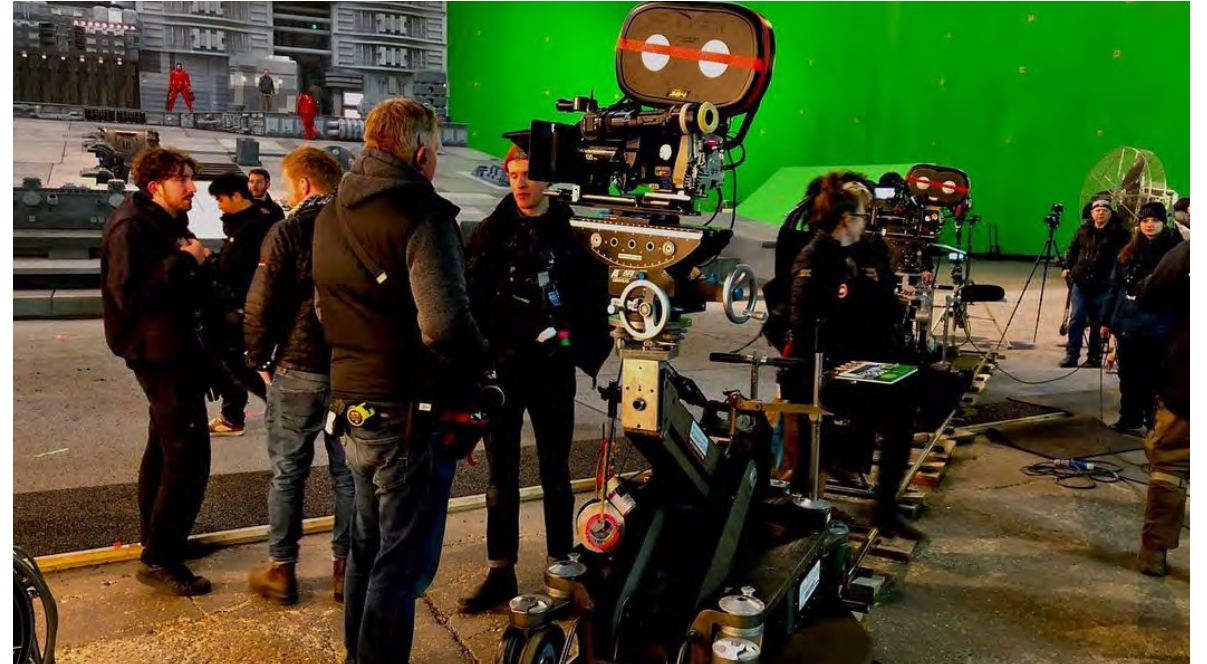
Gross worldwide
\$1,074,149,279







ROGUE ONE



A low-angle shot of Batman standing in front of a tall, dark building that is engulfed in bright orange and yellow flames. Debris is falling from the building, and the sky is dark and smoky. The overall tone is dramatic and intense.

THE DARK KNIGHT



A dramatic, low-angle shot of Batman standing amidst the ruins of a city. The background is filled with smoke, fire, and the skeletal remains of buildings, creating a sense of devastation. The lighting is warm and intense, highlighting the textures of the destruction and the contours of Batman's suit.

THE DARK KNIGHT RISES

DARK KNIGHT

THE DARK KNIGHT RISES (2012)

Eight years after the Joker's reign of anarchy, Batman, with the help of the enigmatic Catwoman, is forced from his exile to save Gotham City from the brutal guerrilla terrorist Bane.

As with Batman Begins and The Dark Knight (as well as Nolan's Inception), sets were built in one of the two huge airship hangars at Cardington in Bedfordshire, north of London. Three miles south of Bedford, the Cardington Hangars are ideally suited to large-scale film making – they're the largest structures of their kind in Europe.

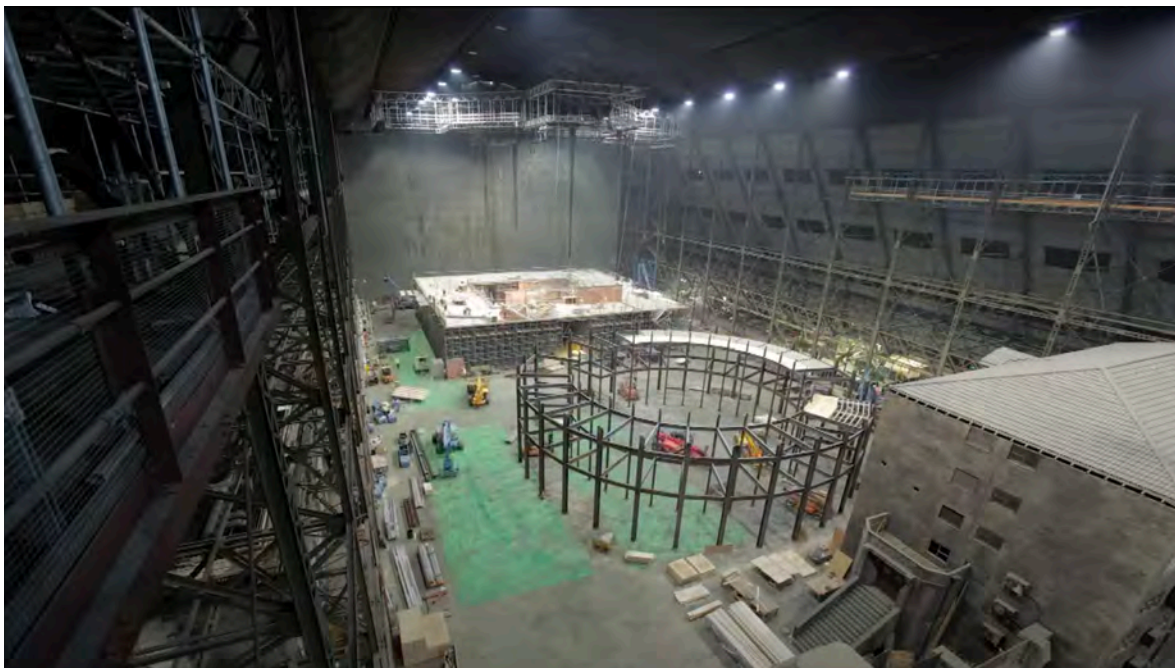
WARNER BROS

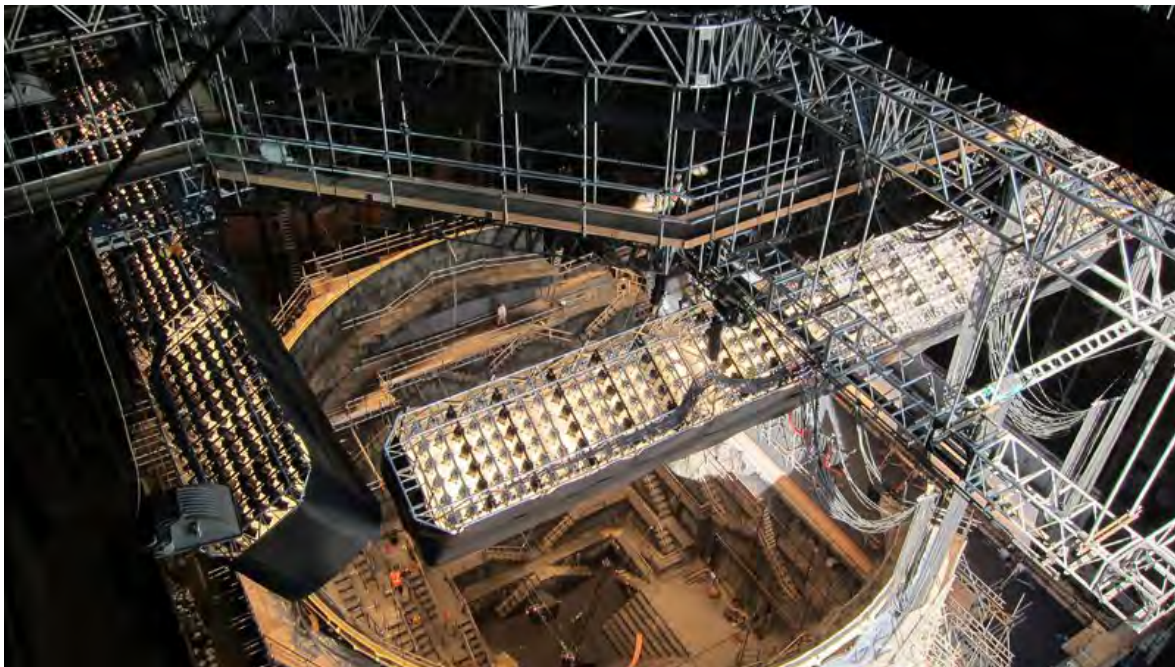
Budget £250,000,000

Gross worldwide
\$1,081,142,612











FANTASTIC BEASTS



FANTASTIC BEASTS

FANTASTIC BEASTS AND WHERE TO FIND THEM (2016)

The adventures of writer Newt Scamander in New York's secret community of witches and wizards seventy years before Harry Potter reads his book in school.

WARNER BROS

Budget
\$180,000,000

Gross worldwide
\$814,044,001







FRED CLAUS







DUMBO

DUMBO

DUMBO 2019

A young elephant, whose oversized ears enable him to fly, helps save a struggling circus, but when the circus plans a new venture, Dumbo and his friends discover dark secrets beneath its shiny veneer.

WALT DISNEY

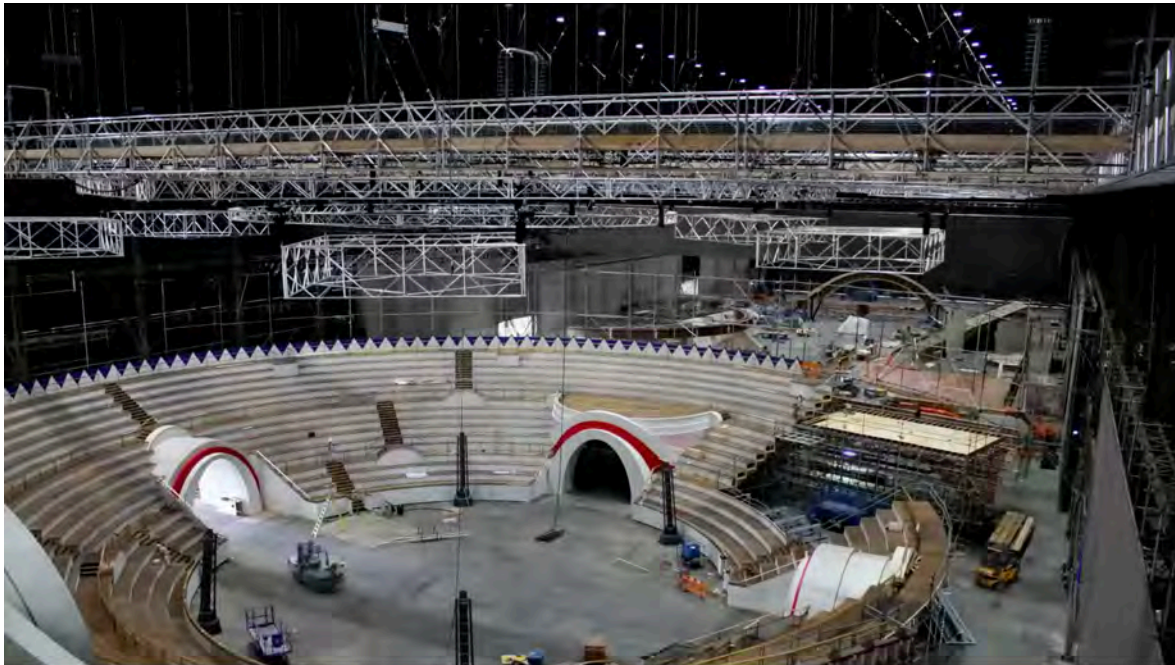
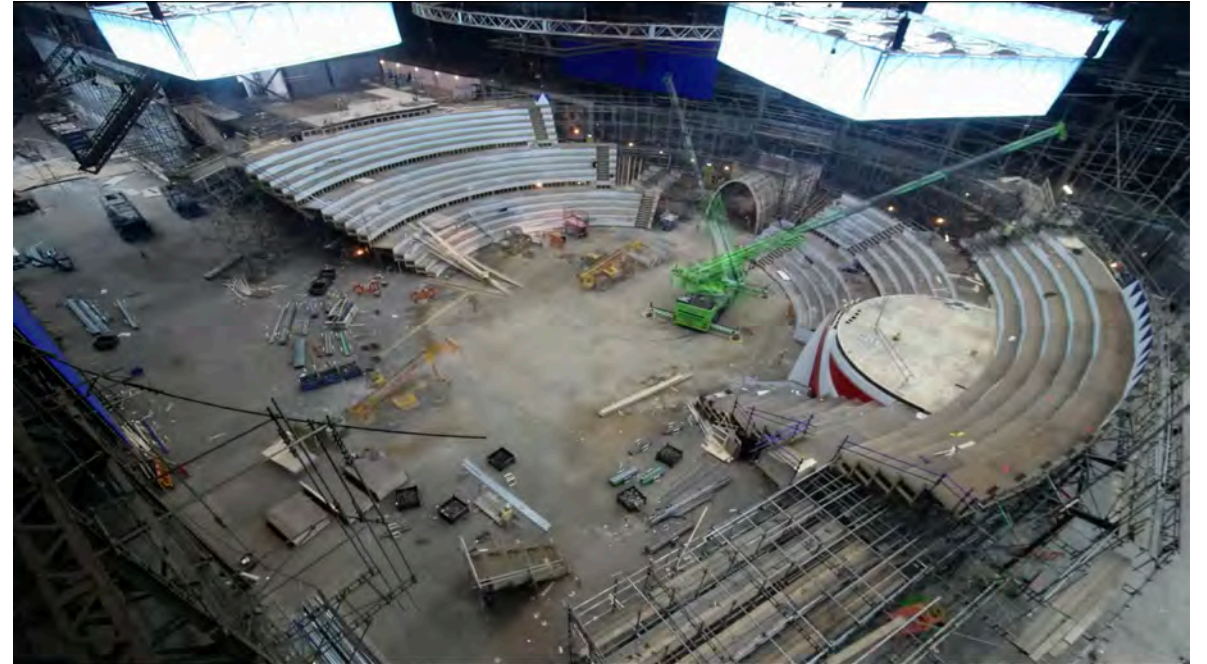
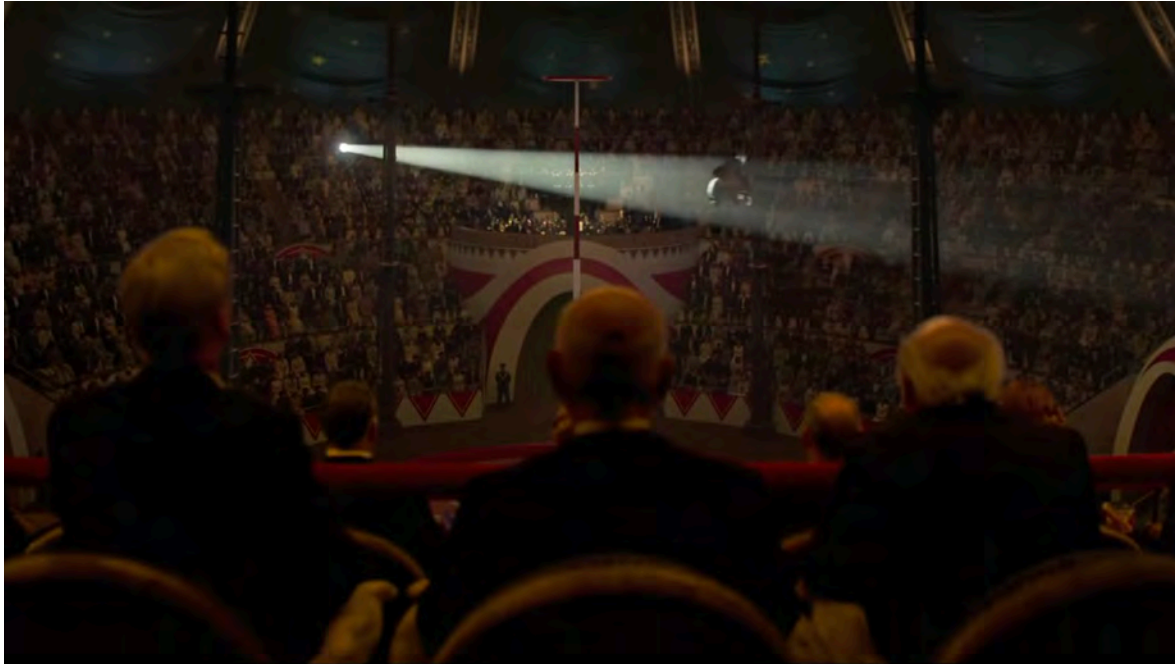
Budget

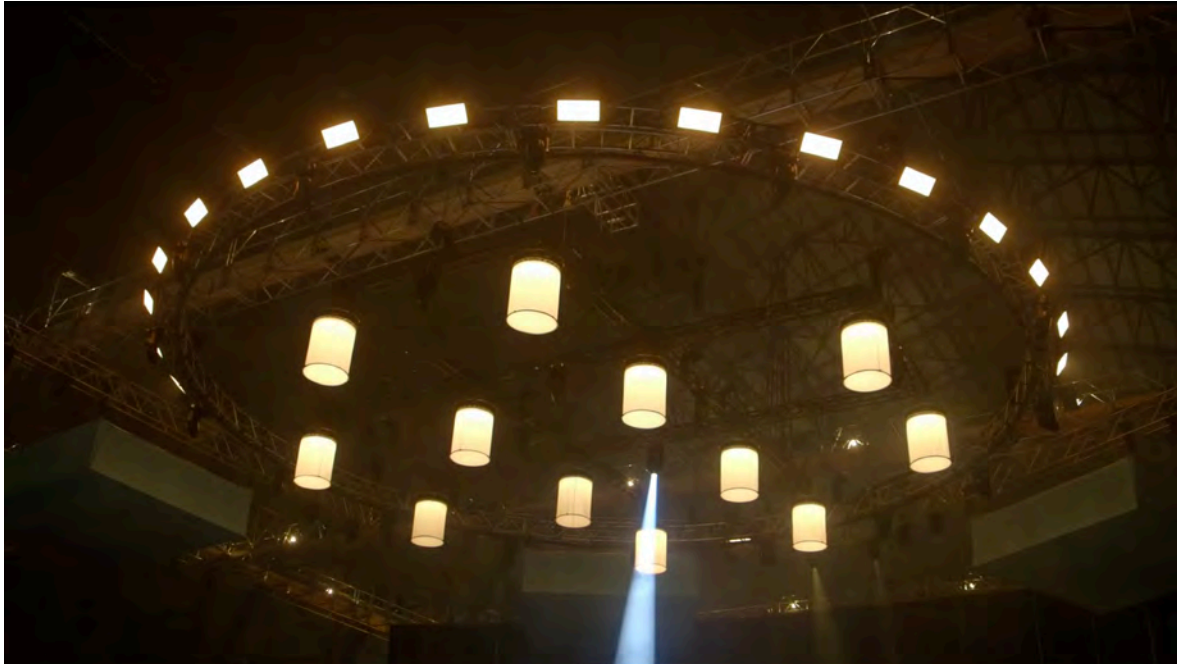
\$170,000,000

Gross worldwide

\$353,284,621







A cinematic still from the movie Inception. A man in a dark suit, seen from behind, stands in a flooded city street. He is holding a handgun in his right hand. The street is filled with water, and there are splashes around him. In the background, tall skyscrapers rise against a cloudy sky. The word "INCEPTION" is overlaid in large, white, sans-serif capital letters across the center of the image.

INCEPTION

INCEPTION

INCEPTION 2010

A thief who steals corporate secrets through the use of dream-sharing technology is given the inverse task of planting an idea into the mind of a C.E.O., but his tragic past may doom the project and his team to disaster.

Cardington Airship Sheds: The revolving hotel corridor set and elevator shaft (constructed horizontally) were built at Cardington, Shed 2. Elements of the shed structure were incorporated into the elevator shaft set and can be seen in the finished movie.

WARNER BROS / LEGENDARY PICTURES

Budget

\$160,000,000

Gross worldwide

\$836,836,967









The image features the character Black Widow in her iconic black tactical suit, standing centrally. She is holding two vibranium claws, one in each hand. The background is a vibrant, monochromatic red with complex, mechanical, and organic patterns that suggest a high-tech or industrial environment. The lighting is dramatic, highlighting the contours of her suit and the texture of the background.

BLACK WIDOW

BLACK WIDOW

BLACK WIDOW 2021

In Marvel Studios' action-packed spy thriller "Black Widow," Natasha Romanoff aka Black Widow confronts the darker parts of her ledger when a dangerous conspiracy with ties to her past arises. Pursued by a force that will stop at nothing to bring her down, Natasha must deal with her history as a spy and the broken relationships left in her wake long before she became an Avenger.

WALT DISNEY / MARVEL STUDIOS

Budget
\$200,000,000

Gross worldwide
\$379,631,351









PAN



The image shows a large, modern exhibition hall. In the foreground, a large, curved, red structure with white abstract patterns is visible. The background is filled with various exhibits, including a large white cube-like structure on the left and a red, star-like structure on the right. The ceiling is high and features a complex network of lights and structural elements. The overall atmosphere is dynamic and futuristic, with a mix of blue, red, and white lighting. The word "REVOLUTION" is prominently displayed in the center of the image.

REVOLUTION



MUSIC VIDEO



