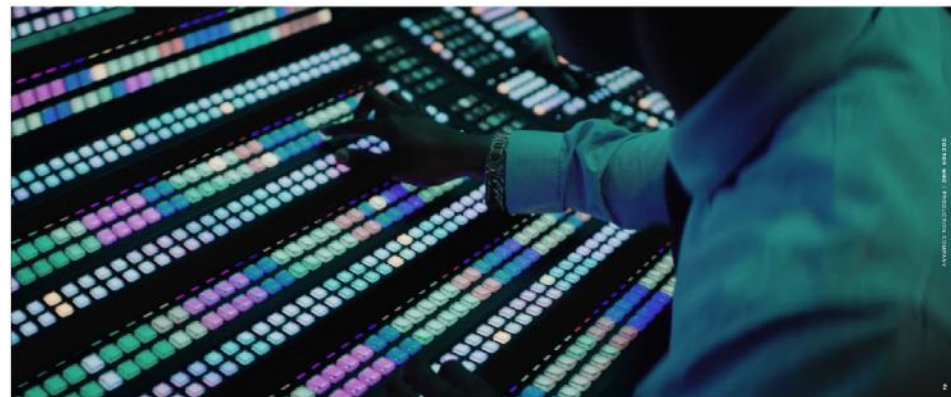
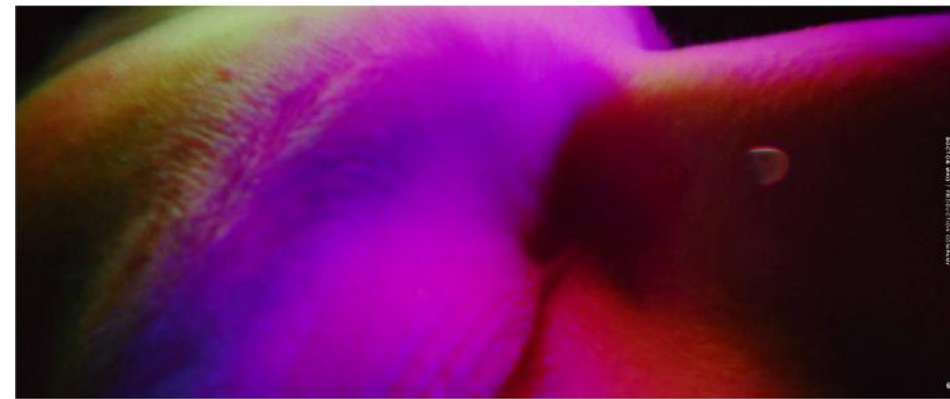


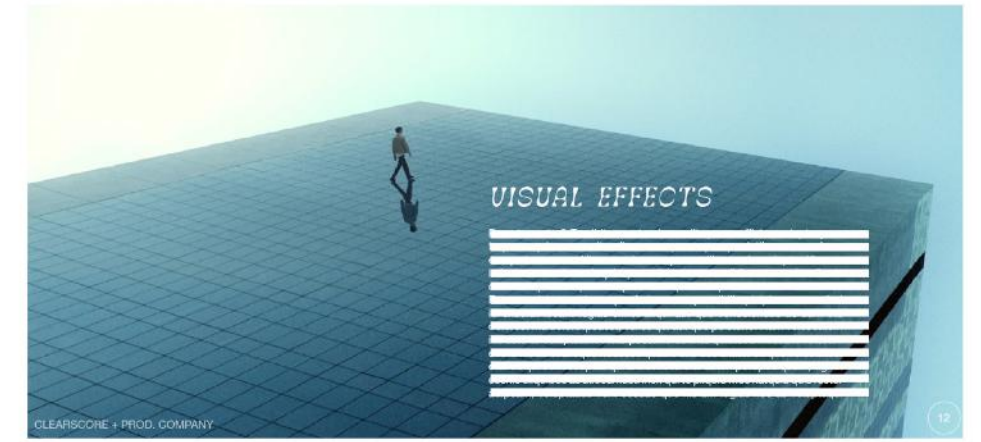
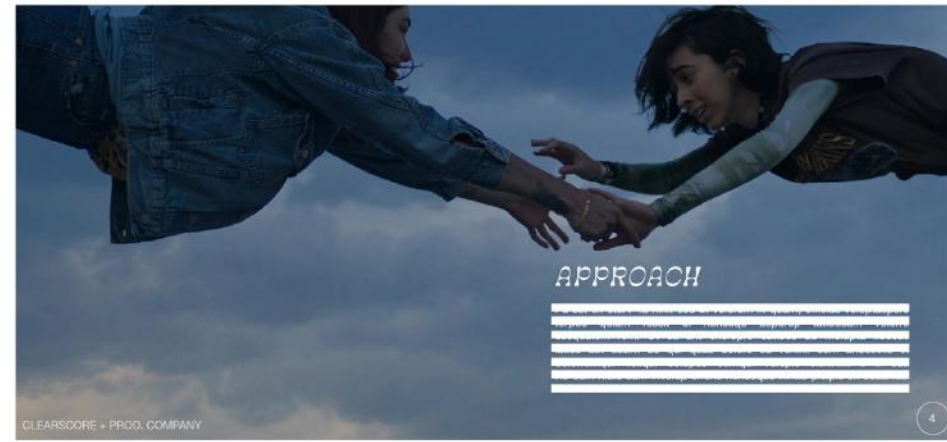
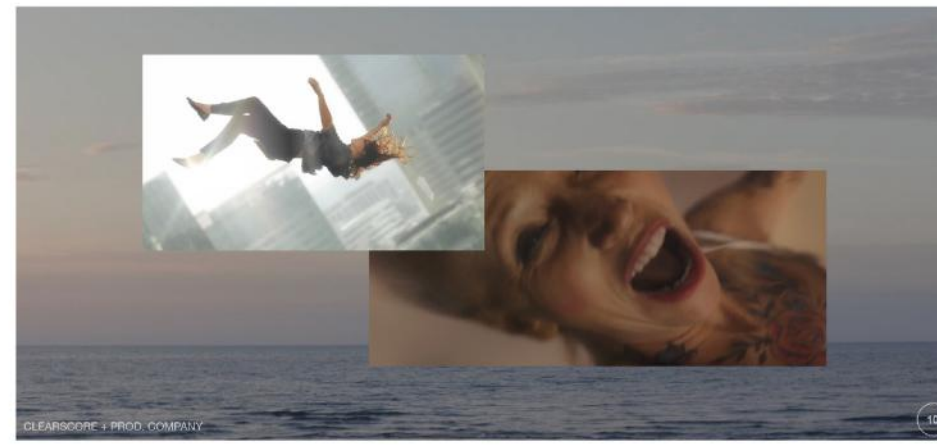
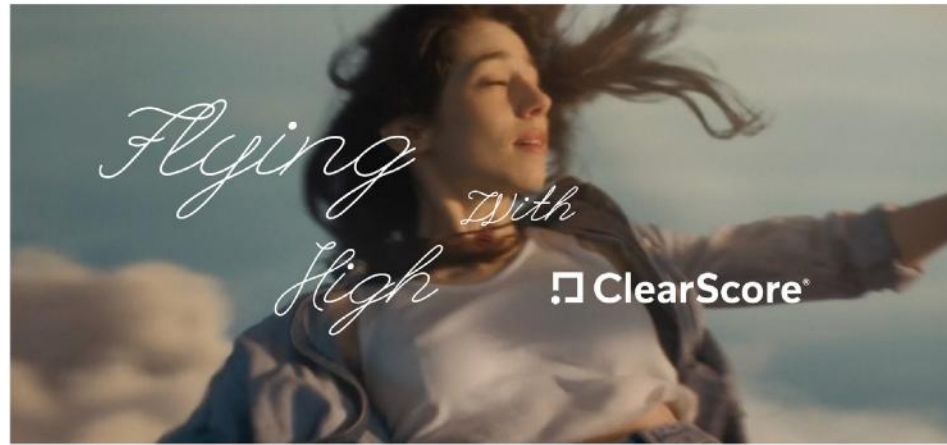
REBECCA GOSNELL.

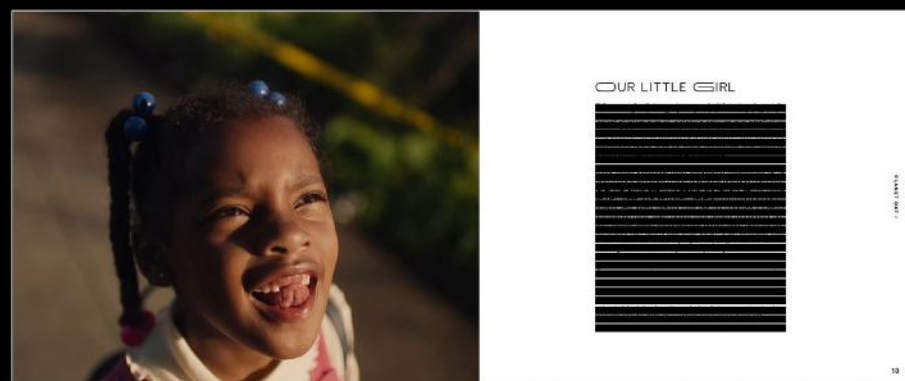
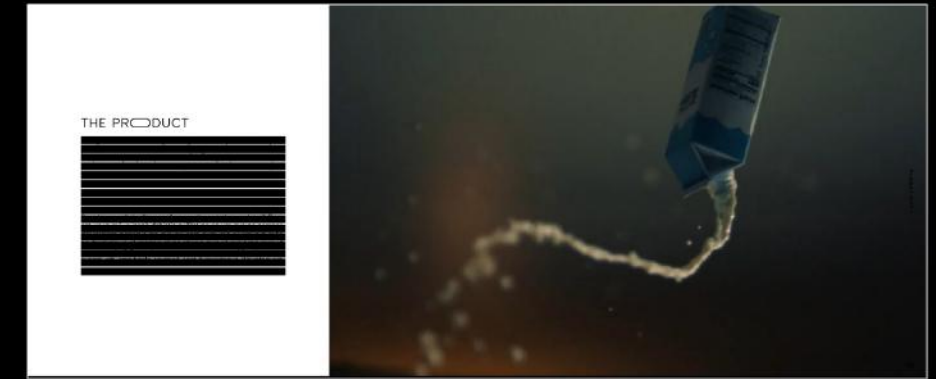
RESEARCH + DESIGN.

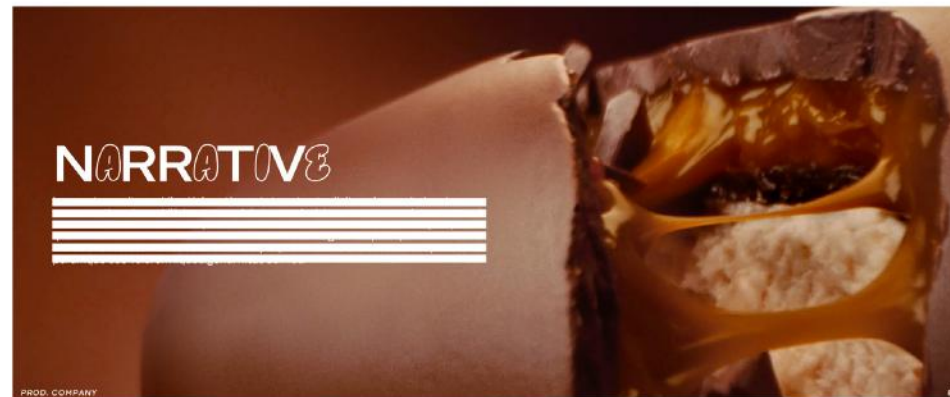
“Rebecca is an exceptional designer. She immerses herself into the creative process beautifully and is also very diligent, thorough and communicative.”

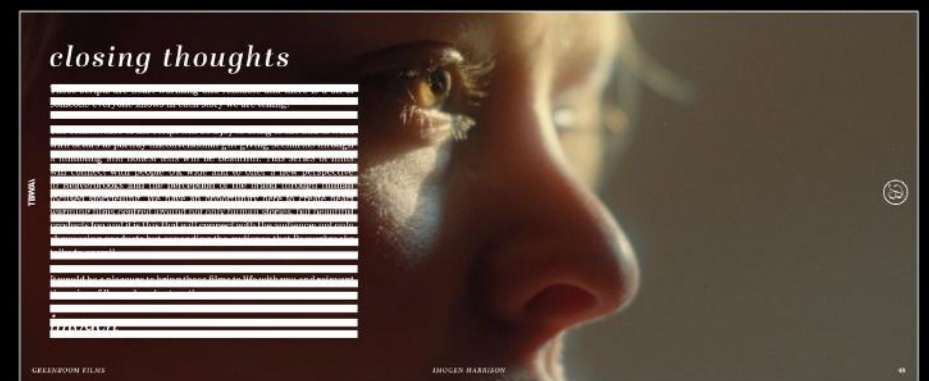
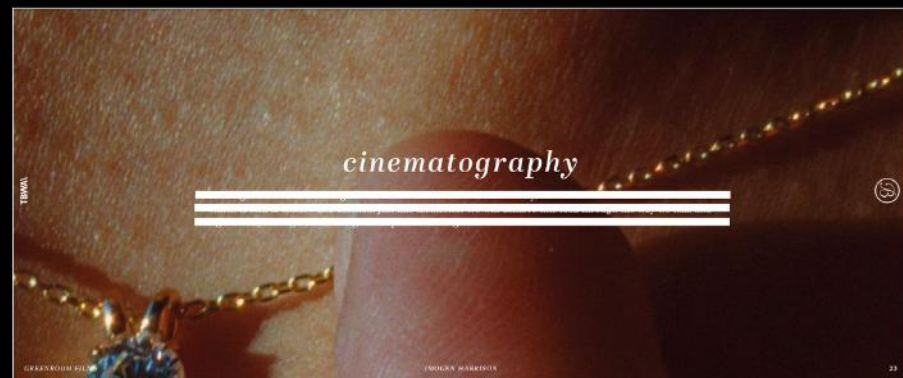


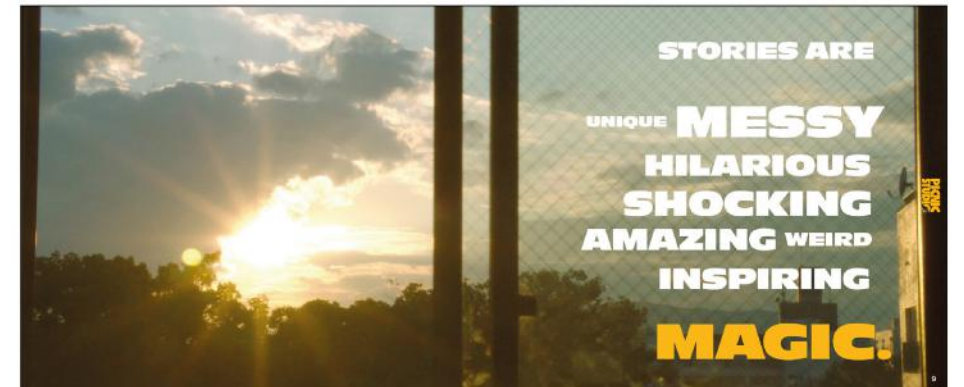
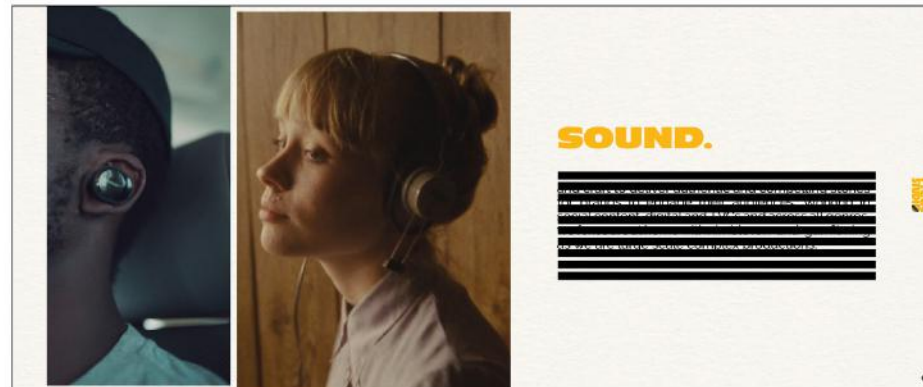
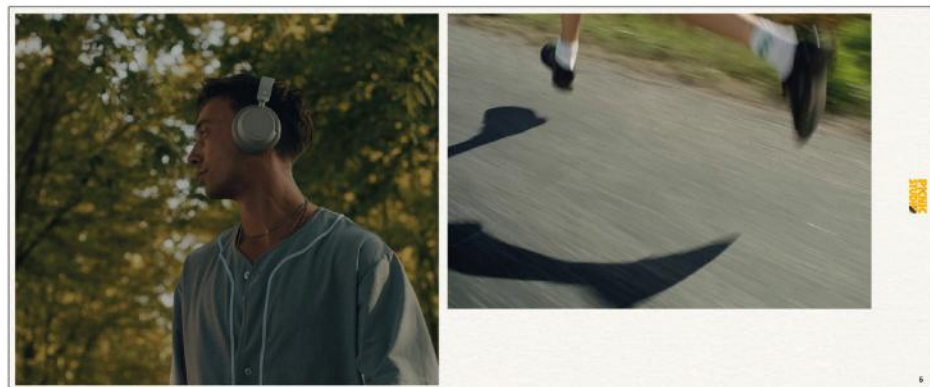
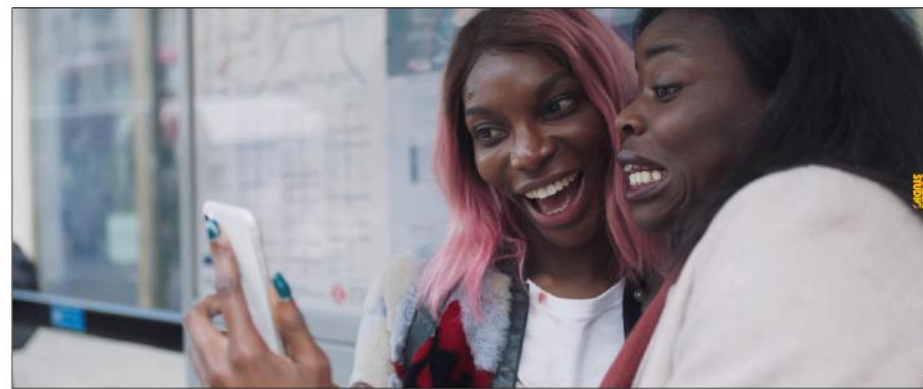
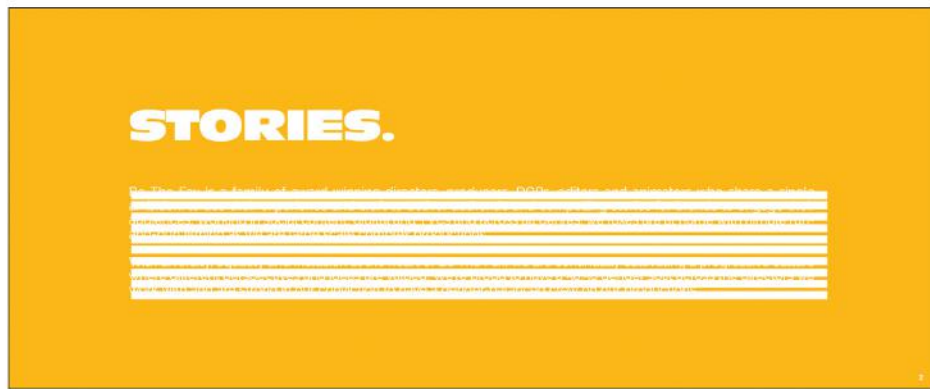
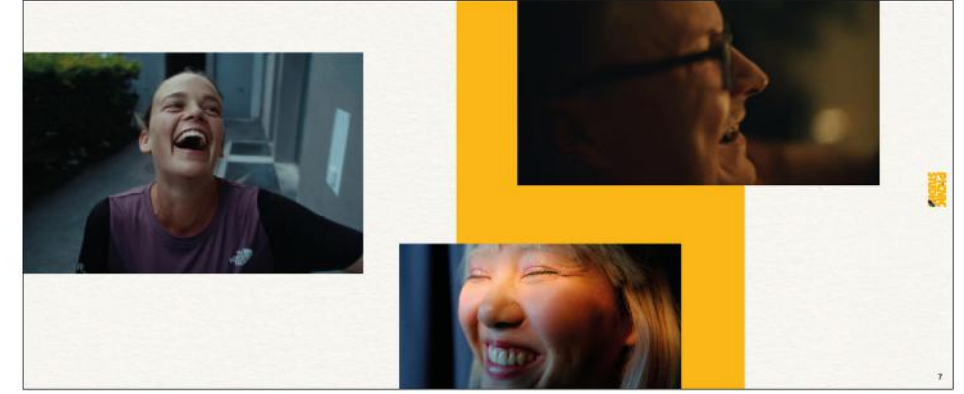


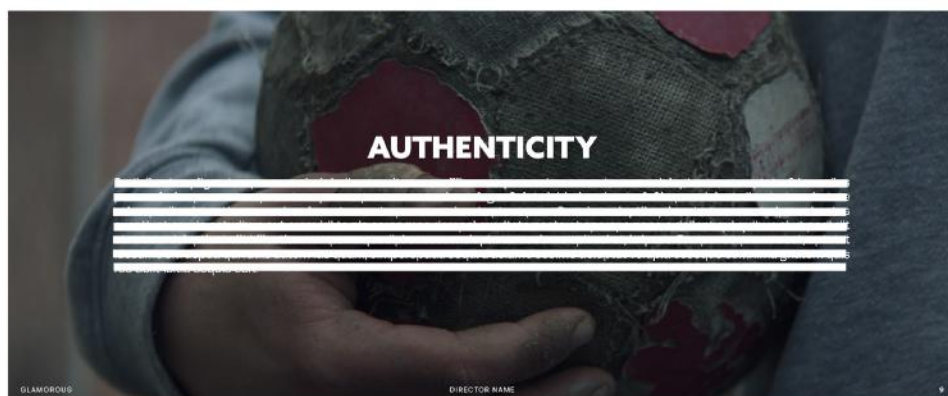
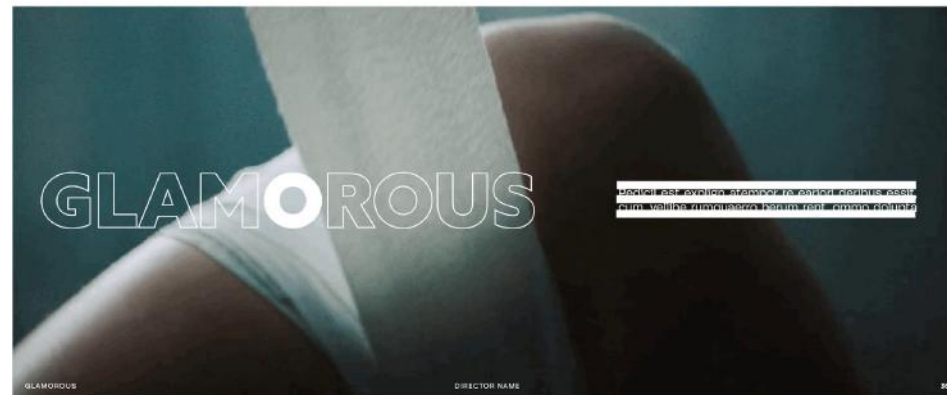
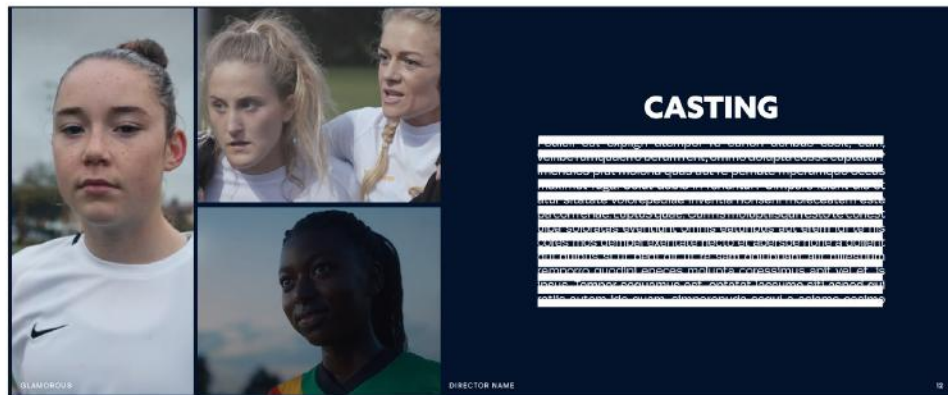
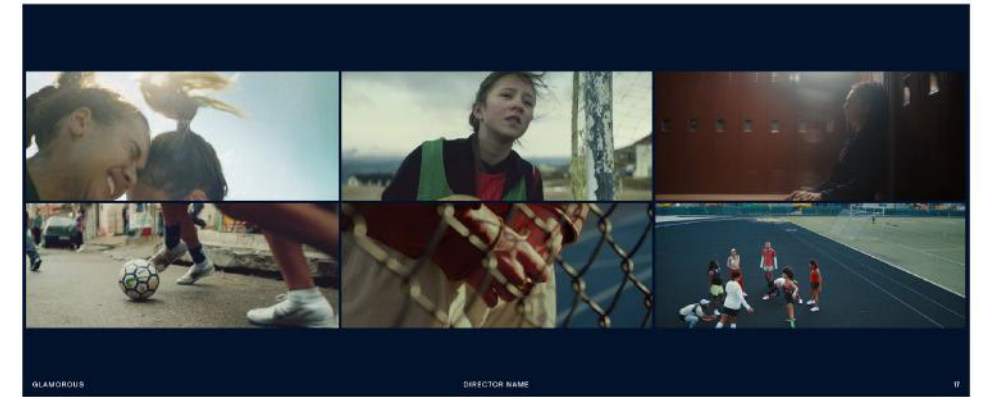


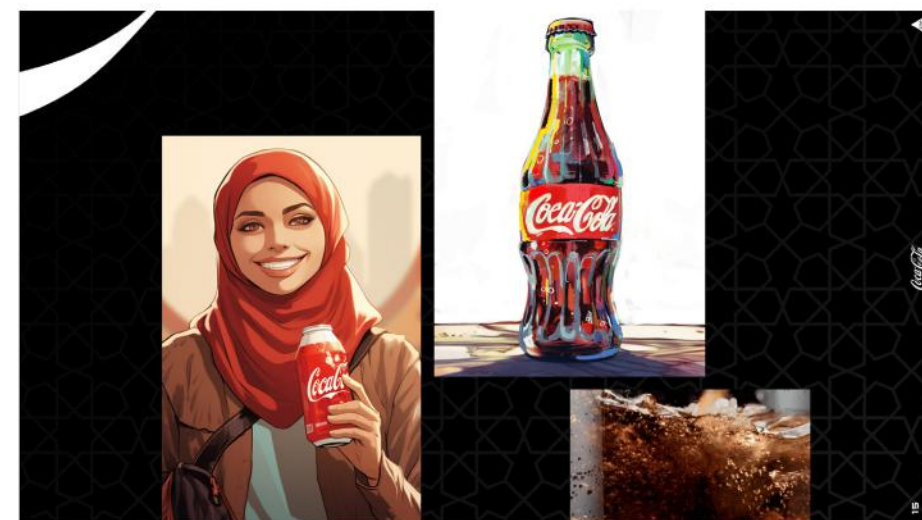
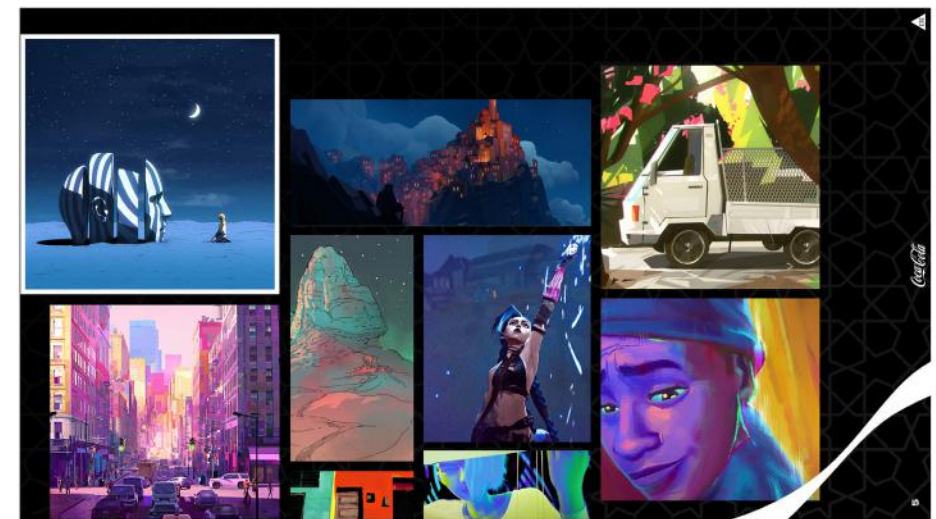
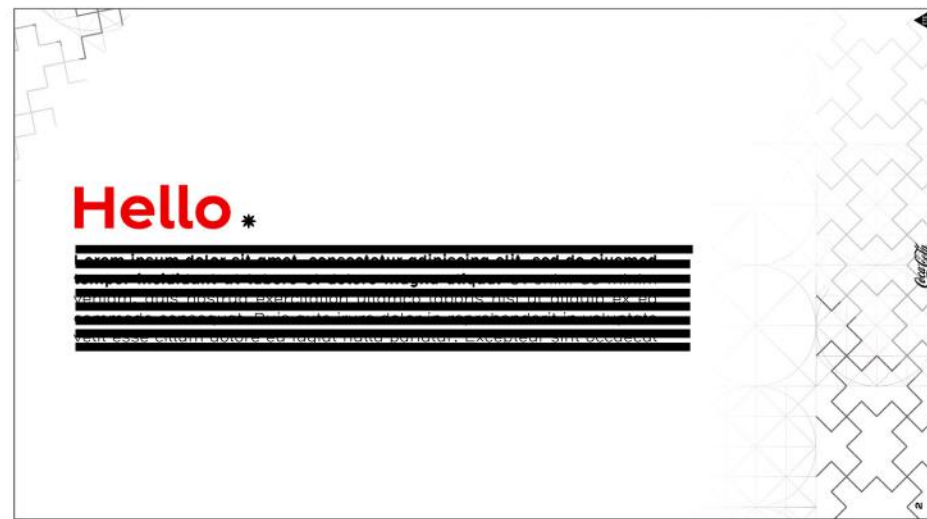
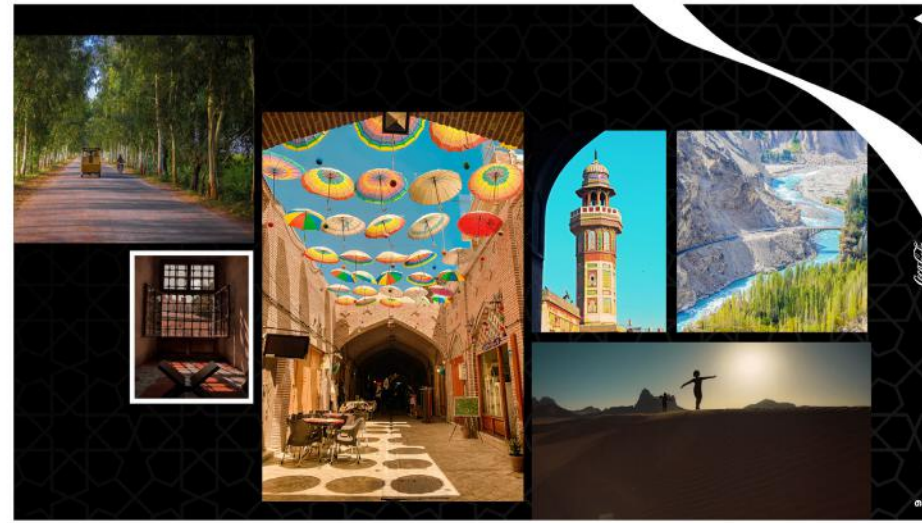


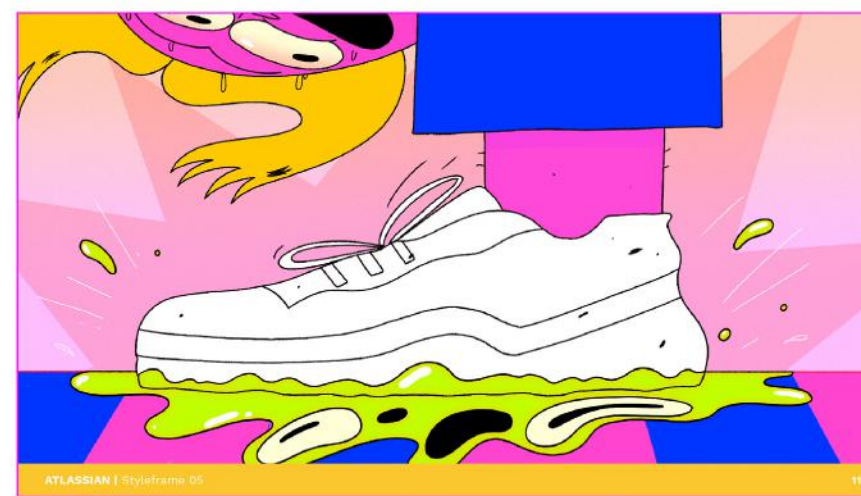
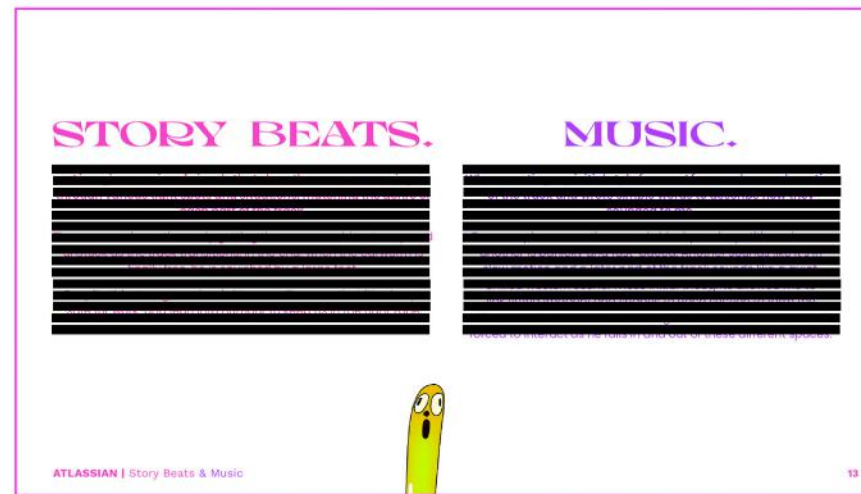
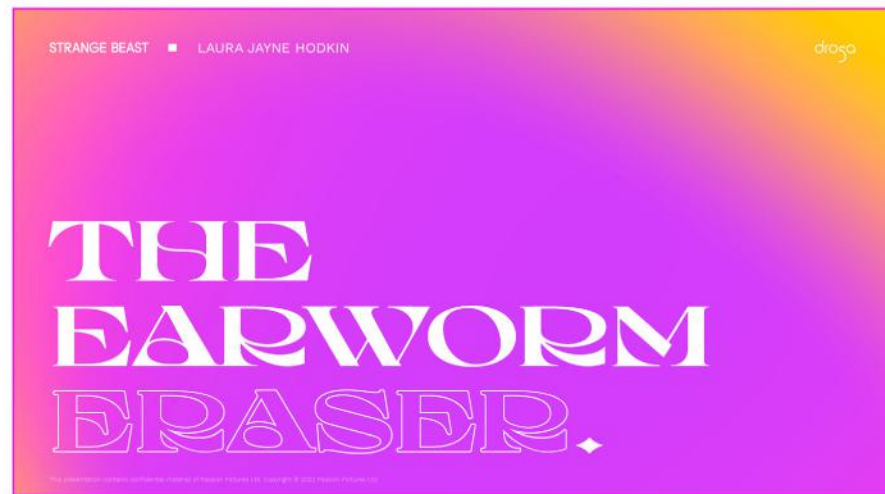


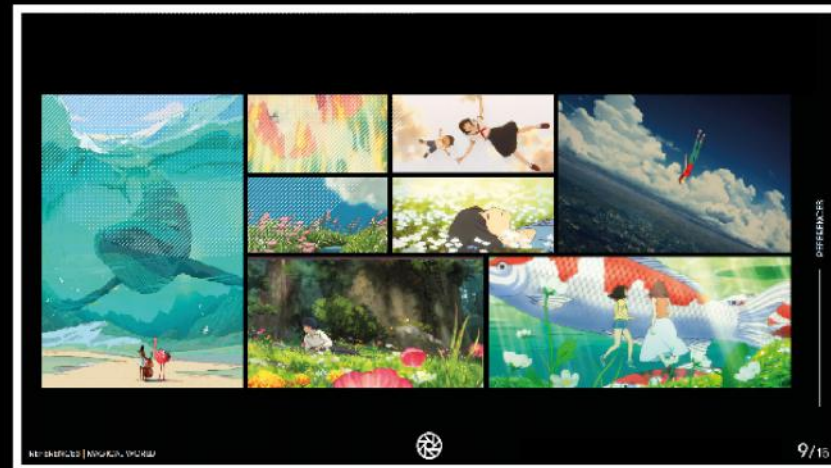
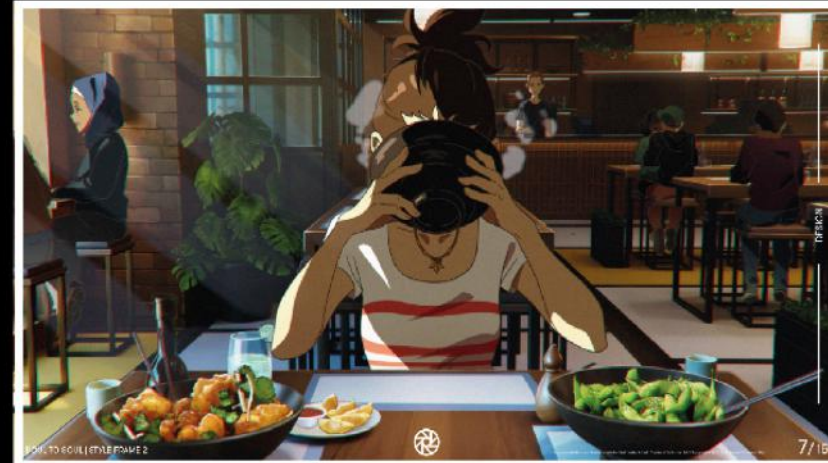
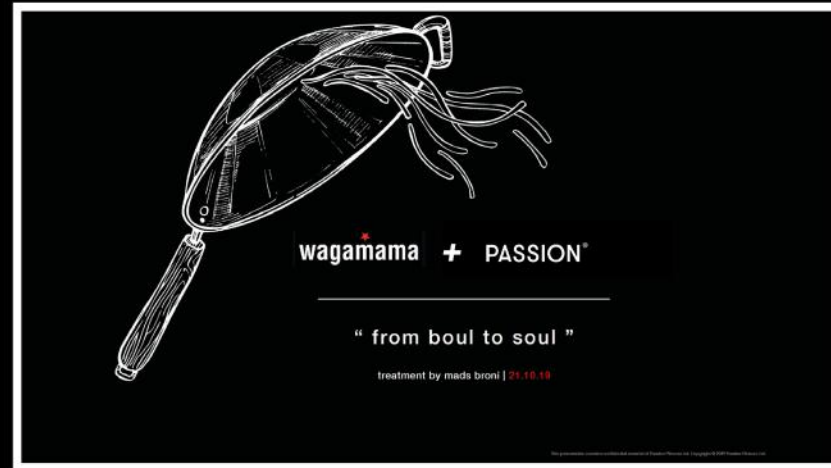


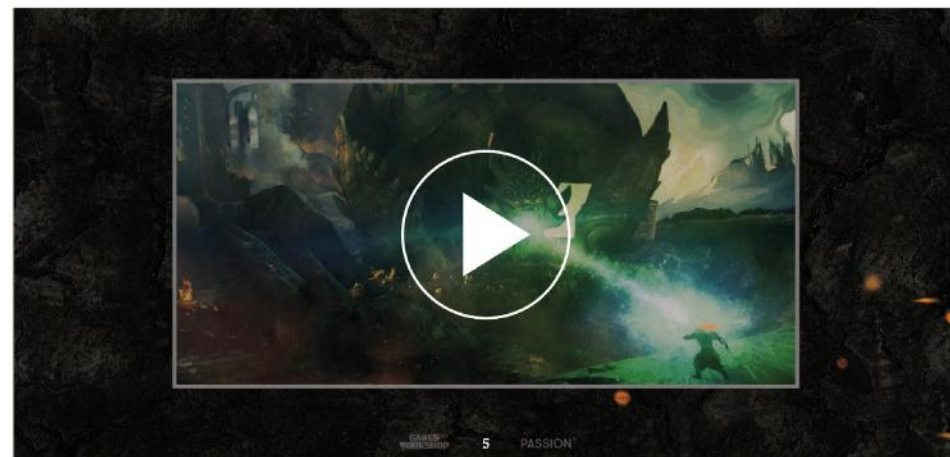
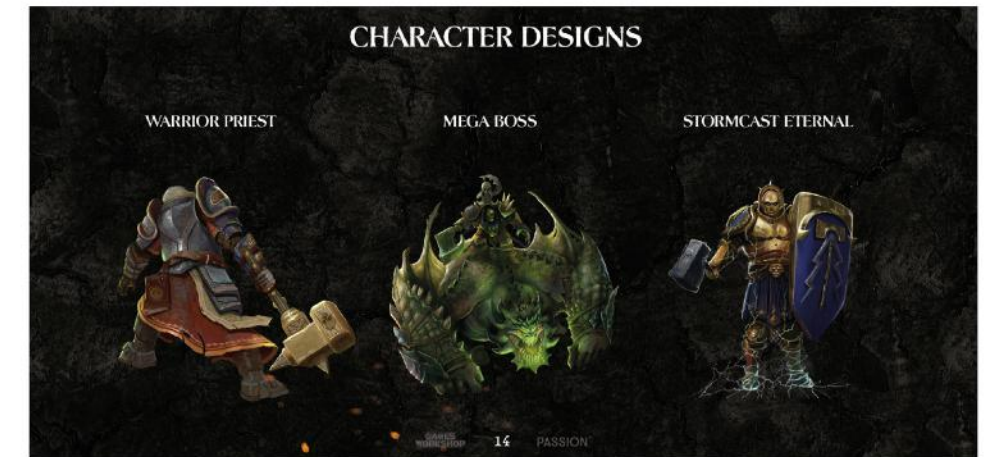
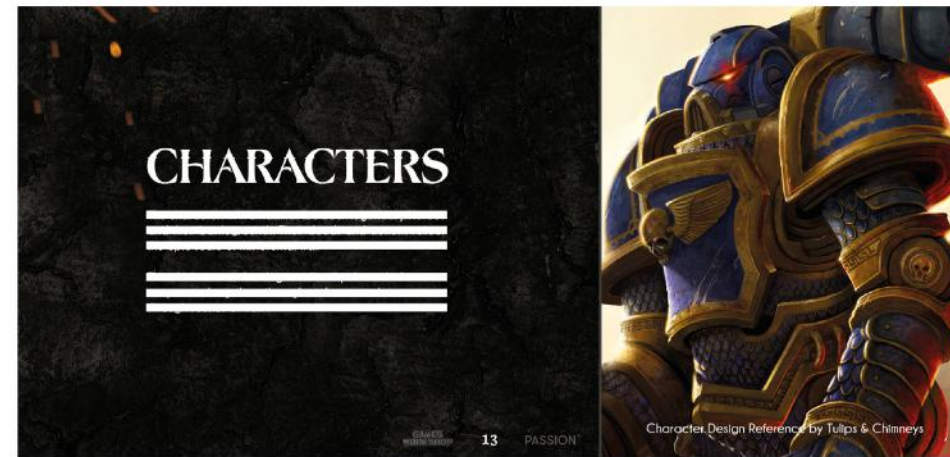












TREATMENT by TULIPS & CHIMNEYS

EYE CANDY

WINDMILL - VANILLA WAFFLE CONE

STRANGE BEAST

WINDMILL SKETCHES

STRANGE BEAST

TEXTURE REFERENCES

STRANGE BEAST

HELLO

THANK you,
TULIPS & CHIMNEYS

STRANGE BEAST

STYLE & TECHNIQUE

STRANGE BEAST

OUR approach

STRANGE BEAST

WINDMILL STYLE FRAME

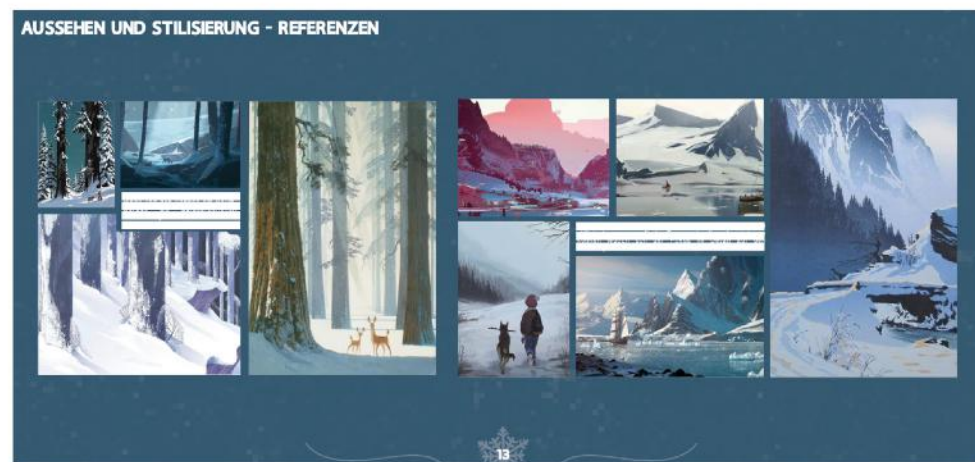
STRANGE BEAST

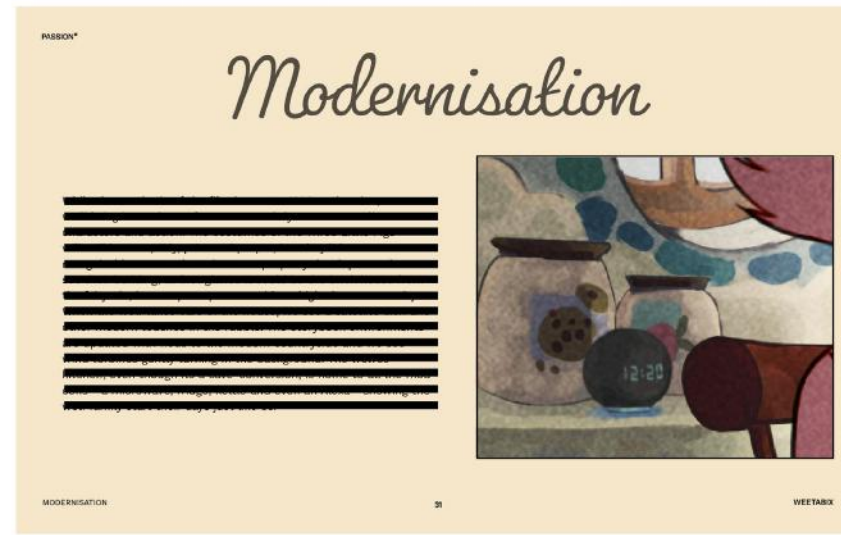
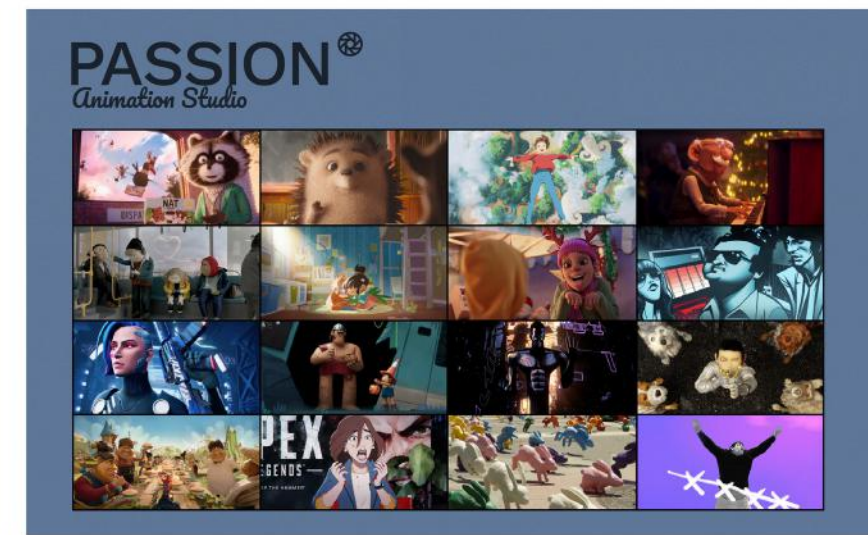
VANILLA SKETCHES

STRANGE BEAST

THANK you

STRANGE BEAST







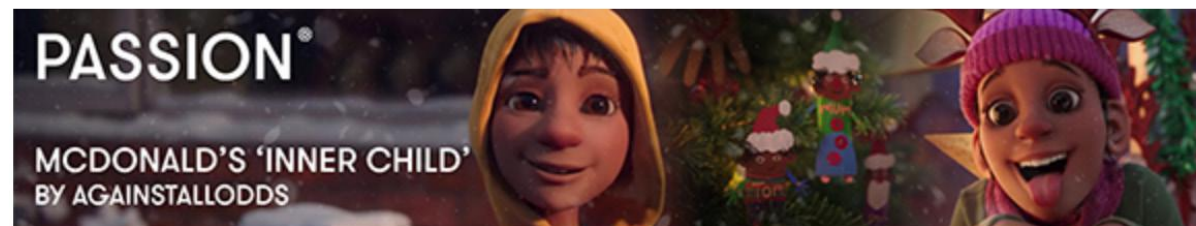


SAM GRAY
Head of Business Development

—
33-34 Rathbone Place
London W1T 1JN
+44 (0)20 7323 9933
+44 (0) 7835 767 548


www.passion-pictures.com

PASSION ANIMATION STUDIOS



THE GAUTREY FAMILY SWEET SHOP

118



EST. 1995

CAKES
SCONES
BISCUITS
TOFFEE
FUDGE

COFFEE & BOOKS

120

LIGHTING THE WAY SINCE 1989

122

LAMP WORLD



ELECTRONICS | REPAIRS | FITTINGS | ACCESSORIES

bloomin' lovely flowers

020 7796 1593

126

128

• Taylor's Toybox •



Free Gift-Wrapping

Free Delivery

Still From Pre-Vis (02/02/21)

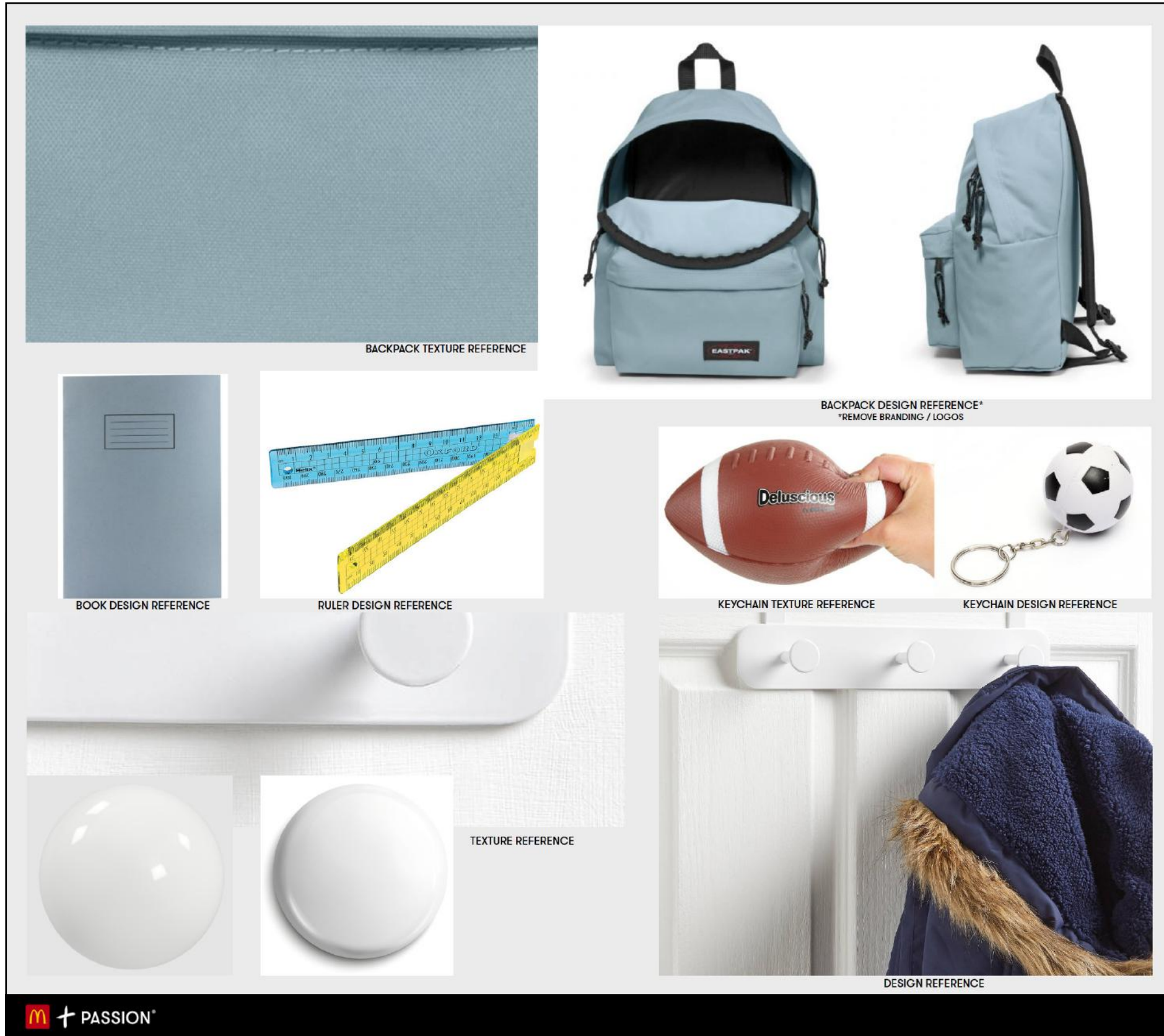


Still From Final Advert (05/03/21)



DESIGN.

PORTFOLIO - BACKGROUND SHOP BRANDING DESIGNS FOR VISION EXPRESS ADVERT



Still From Final Advert (12/11/20)



VISUAL RESEARCH.

PORTFOLIO - TEXTURE + DESIGN REFERENCE RESEARCH FOR MCDONALDS XMAS ADVERT